

1909 HALLSIDE

## **TGP LANDSCAPE PROPOSALS**

## EXISTING CONDITIONS:



- Steel works history
- Workers cottages in South-East
- Willow/alder planted in 1994 with the intention to harvest for biofuel
- Some drainage issues on site, causing areas of flooding
- Recent community footpath along main route

## PROPOSALS:

### **PHASE 1**

- New car park
- Open up wide entrance vistas
- Improvements to central ecology/picnic open greenspace
- New entrance features
- General footpath improvements to main routes

### **PHASE 2**

- Open up main edges into formal greenspace
- Introduce bright wayfinding and signage
- New resting spaces along main loop
- New resting space at the key view point

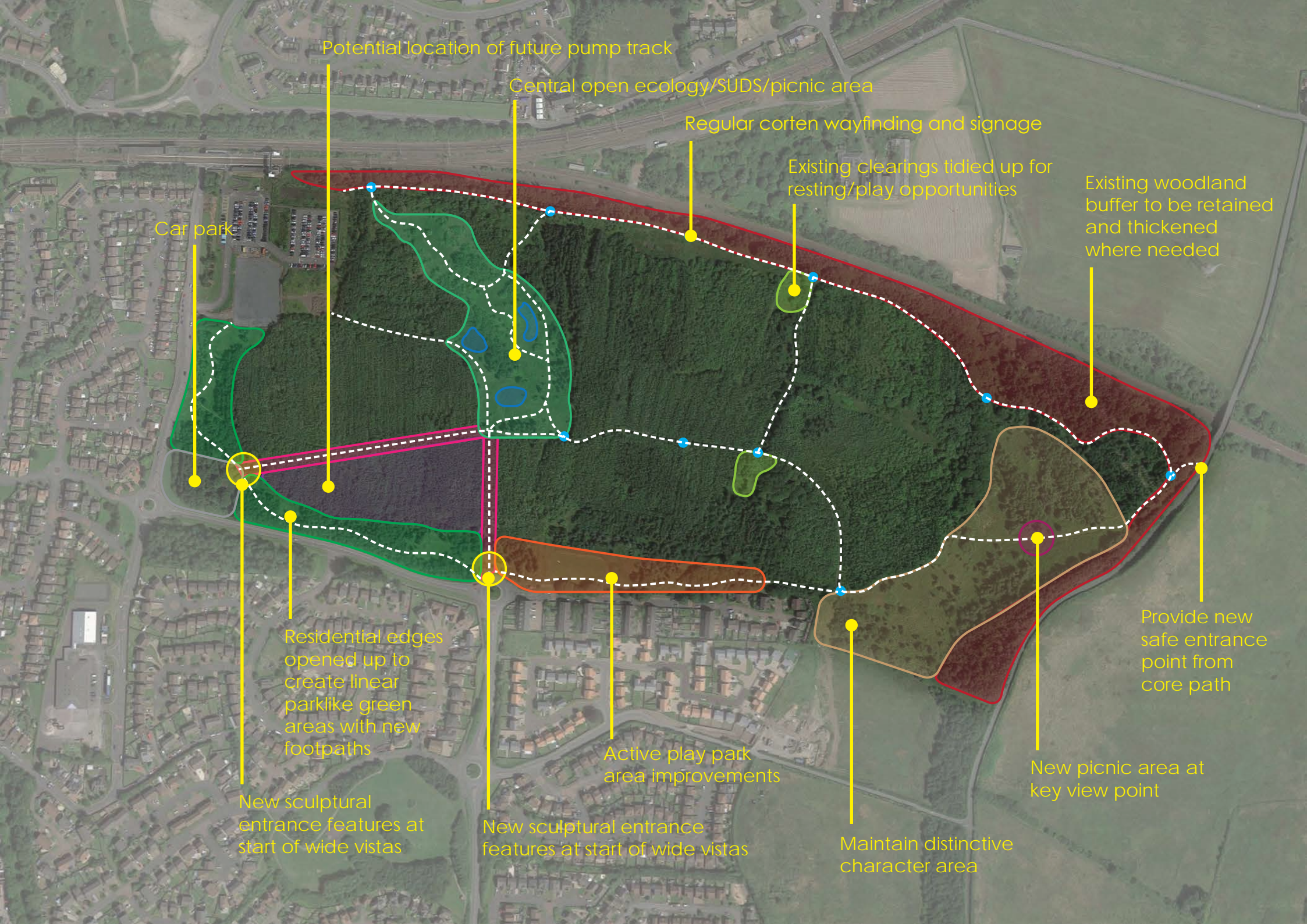
### **PHASE 3**

- Improvements to existing football pitch
- New playground equipment near football pitch
- New outdoor exercise equipment near football pitch
- General improvements to open rural feel character area

### **PHASE 4**

- Open up main edges into formal greenspace
- Introduce bright wayfinding and signage
- New resting spaces along main loop
- New resting space at the key view point

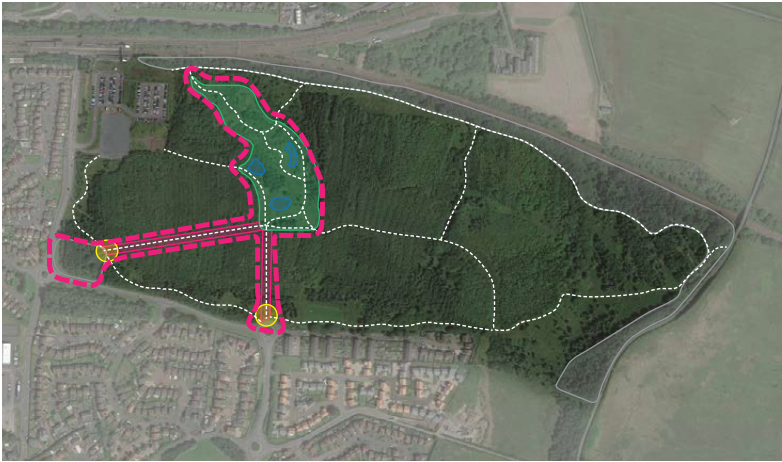






## PHASE 1:

- New car park
- Open up wide entrance vistas
- Improvements to central ecology/picnic open greenspace
- New entrance features
- General footpath improvements to main routes



### New Car Park

Rural feel gravel car park with wooden space markers introduced in the South-West of the site.



### Entrance Vistas

Main entrance paths are widened to 8m wide vistas through the woodland with lawn either side to lead into central space and increase visibility.



### Central Greenspace

Existing open space is improved, with boardwalks added over existing ponds and reed beds, connecting more formal picnic areas.



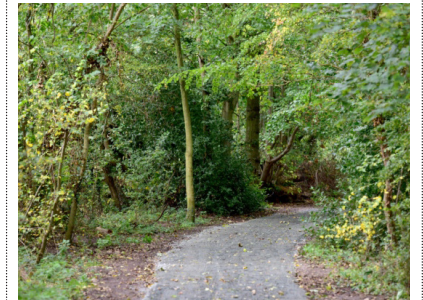
### Entrance Features

Coppiced wood from site is used by local tradesmen and artists to create interesting new sculptural entrance features to mark the main paths.



### Footpath Improvements

The main footpaths are improved with new materials, better drainage, and raised boardwalks where needed.







## PHASE 2:

- Open up main edges into formal greenspace
- Introduce bright wayfinding and signage
- New resting spaces along main loop
- New resting space at the key view point

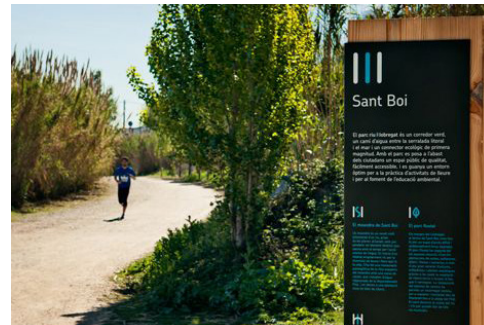
### Formal Park Edges

The main edges of the site beside the road to be opened up to create a formal park feel, with the footpath winding through lawn and occasional clusters of retained trees.



### Signage and Wayfinding

Educational signage about ecology and species to look out for, as well as general wayfinders, and information about the main trail loop and times/distances.



### Resting Spaces

Existing woodland clearings opened up and formalised to create resting spaces and play elements along the main trail loop.



### View Point

Main resting place at the existing high point with views over the site and back towards the nearby housing, with potential for sculpture or play elements.







## PHASE 3:

- Improvements to existing football pitch
- New playground equipment near football pitch
- New outdoor exercise equipment near football pitch
- General improvements to open rural feel character area

### Football Pitch

General improvements to existing football pitch, with improved drainage, and some seating around the edges.



### Play Equipment

New play equipment to replace the existing equipment next to the football pitch. Natural materials in-keeping with the woodland setting preferable.



### Exercise Equipment

New outdoor exercise equipment to be introduced near the housing and football pitch where it will be overlooked to reduce vandalism.



### Rural Character Area

Maintenance of existing vegetation, clipping of trees as required to maintain the open feel and the views.







## PHASE 4:

- General woodland management
- New bike pump track in South-West woodland

### Bike Pump Track

New bike pump track to be introduced amongst the existing woodland to the South-West of the site - to provide a dedicated space for cyclists and contain mountain bikers, reducing risk of the rest of the site being used for this.



### Woodland Management

**Thinning:** Existing woodland is thinned by removing 1 in 6 trees across the site, with 1 in 4 trees being removed in areas of monoculture to allow a wider variety of species to grow.

**Copicing:** Areas of woodland are to be copiced for use in fences, sculpture, signage, and play features across the site. Large monocultures of willow trees would be ideal areas for copicing.

**New Planting:** A variety of local tree species are planted throughout the woodland to provide a wider variety of trees and shrubs for wildlife habitats.

**Buffer:** The existing buffer is bulked up with additional under storey planting to discourage people from entering into these edge areas.

**Shaping:** Tree crowns to be lifted in areas, and understorey planting reduced, to increase visibility through key areas of woodland and therefore increase safety.